



2024 - 2025 ANNUAL REPORT

INSTITUTE OF STATISTICAL,
SOCIAL AND ECONOMIC
RESEARCH (ISSER)

College of Humanities,
University of Ghana



CONTENT

01. Executive Summary
02. Director's Welcome
03. Our Numbers
04. Research Activity Highlights
05. Events and Policy Advocacy
06. Capacity Building, Teaching, and Training
07. Student Experience and Alumni
08. Communication and Knowledge Outreach
09. Partnerships and Collaborations



EXECUTIVE SUMMARY

The 2024–2025 reporting period marked a year of strategic progress for ISSER, characterised by strong research outputs, expanded stakeholder engagement, and sustained investment in capacity building to support evidence-based policymaking in Ghana and across Africa.

Research and Knowledge Production

During the period, ISSER issued three flagship institutional publications: the Ghana Social Development Outlook (GSDO 2024), supported by ten policy briefs, and two editions of the State of the Ghanaian Economy Report (SGER 2023 and SGER 2024), offering timely, data-driven insights for national policy discourse.

Alongside faculty publications, the period recorded notable project-based outputs. These included *Firms and Digital Payments: Evidence from Censal Microdata*, Ghana's first census-based study of digital payment adoption, drawing on data from over 1.9 million businesses. The study was produced by ISSER's ReFinD Research Initiative in collaboration with the Ghana Statistical Service. The Modern Energy Cooking Services (MECS) Phase II project also delivered an *E-Cookbook for Urban Ghana*, contributing evidence to support the country's energy transition agenda.

The Institute expanded its research portfolio through new initiatives, most prominently the *Youth in Indigenous Enterprises in the Informal Sector project* -- a seven-country comparative study. As the lead institution, ISSER is coordinating implementation across Ghana, Ethiopia, Nigeria, Senegal, Kenya, Uganda, and Tanzania. In total, ISSER managed over 20 active research projects spanning agriculture, health, education, taxation, labour, and financial inclusion.

ISSER also sustained its Seminar Series as a core research and learning platform, hosting over 15 presentations by researchers from ISSER and other institutions in Ghana and internationally. The series fostered intellectual exchange, peer learning, and the development of new research ideas and collaborations.

Policy Engagement

ISSER convened or co-organised over 25 outreach and policy engagement events during the period. These included international conferences such as the 2025 Evidence to Action Conference and Exhibition (E2A2025), hosted by ISSER for the second consecutive year, and a multi-country policy dialogue on cocoa sustainability in West Africa organised in collaboration with CIRAD, the University of Ghana, and the Cocoa Research Institute of Ghana.



The Institute also delivered its core annual engagement platforms, including the launches of GSDO 2024 and SGER 2024, as well as the 2026 Budget Statement review. These engagements continue to play a critical role in informing public discourse and strengthening linkages between research evidence and policy decision-making.

Capacity Building and Infrastructure Development

ISSER strengthened its capacity-building mandate through strategic investments in both learning infrastructure and professional development. These complementary efforts were designed to enhance the Institute’s ability to support high-quality research, training, and knowledge exchange.

The inauguration of a 40-seat e-library in December 2024 and a 60-seat digital centre in September 2024 significantly improved access to digital resources, data platforms, and collaborative learning spaces for students, faculty, and visiting researchers. These facilities now serve as core hubs for teaching, research, and academic engagement.

Within this strengthened learning environment, the Institute successfully delivered the fourth Research School on Sustainable Development and Poverty Reduction, bringing together doctoral students from eight Ghanaian universities for intensive methodological training and interdisciplinary learning.

ISSER continued to attract strong enrolment across its regular training programmes, including its MA and PhD degrees and a range of short professional courses. These programmes brought together students and practitioners from diverse disciplinary and institutional backgrounds, reinforcing ISSER’s role as a hub for advanced training in development research and policy. A key highlight during the period was the delivery of a tailored Monitoring and Evaluation programme for staff of the Ministry of Foreign Affairs, which strengthened professional capacity and exemplified ISSER’s contribution to national skills development.

Alumni Relations and Organisational Culture

A major milestone during the year was the Institute’s first formal alumni–faculty forum, held in October 2025, which laid the foundation for sustained alumni engagement, mentorship, and collaboration. ISSER also reaffirmed its commitment to staff wellbeing through initiatives such as Pink October breast cancer awareness activities, health screening sessions, and a staff health walk.

Leadership and Strategic Direction

The period included the appointment of Prof. Robert Darko Osei as Director in August 2025. Throughout the year, ISSER continued to strengthen its internal systems and organisational foundations, providing a stable platform for the performance highlights and activities detailed in the sections that follow.

DIRECTOR'S WELCOME



Prof. Robert Darko Osei
Director

It is an honour to assume leadership of the Institute of Statistical, Social and Economic Research (ISSER) and to build on its strong legacy of quality research, training, and policy engagement. I am privileged to work with a dedicated community of faculty, staff, students, alumni, and partners whose collective efforts continue to shape development thinking in Ghana and across Africa.

The year under review reflects a period of purposeful continuity and institutional strengthening. ISSER remained firmly anchored to its mandate of advancing independent, policy-relevant research while providing platforms that connect evidence to decision-making. Across our activities, the Institute demonstrated the enduring relevance of rigorous empirical analysis in addressing complex socio-economic challenges at national and regional levels.

Sustaining a vibrant intellectual environment remains central to ISSER's mission. Through our academic programmes, professional training, and scholarly exchanges, the Institute continued to nurture emerging researchers and practitioners. These efforts contribute directly to a transformative student experience and strengthen the wider research ecosystem of the University of Ghana.

Partnerships are fundamental to ISSER's work. During the period, we deepened collaboration with national and international institutions through joint research, policy dialogue, and convening. Initiatives such as E2A2025 and the multi-country cocoa sustainability dialogue -- led by CIRAD visiting scholars hosted at ISSER -- demonstrated the Institute's research expertise, convening power, and ability to leverage its conference and knowledge infrastructure to

support high-level engagement. I was also pleased to lead strategic engagements with key national institutions, including the Ghana Statistical Service and the National Population Council, to strengthen collaboration in data use and policy analysis.

Equally important is our investment in the people and systems that sustain the Institute. During the year, we reinforced our commitment to staff welfare through targeted wellness initiatives, recognising that institutional excellence is underpinned by a motivated and supported workforce. We also invested in physical, digital, and learning infrastructure to create an enabling environment for 21st-century research and teaching.

Looking ahead, ISSER will continue to be guided by the University of Ghana's strategic priorities of transformative student experience, impactful research, commitment to faculty and staff, engagement and partnerships,

and sustainable resource mobilisation and stewardship. Within this framework, we will strengthen research communication, deepen pan-African collaborations, enhance resource mobilisation, and continue delivering knowledge that informs policy and supports inclusive and sustainable development.

I extend my sincere appreciation to our faculty, staff, students, alumni, partners, and stakeholders for their dedication and collaboration. Together, we will consolidate ISSER's achievements, uphold its values of excellence and integrity, and position the Institute for sustained impact in the years ahead.

Prof. Robert Darko Osei

Director



03

HIGHLIGHTS AT A GLANCE

2024 – 2025 IN NUMBERS

Our People



32
Scholars

26

Research
Fellows

01

Emeritus
Professor

05

Adjunct
and Visiting
Scholars



74
Staff

33

Support
Staff

26

Project
Staff

15

Contract
Staff

Research & Publications



20+

Ongoing
Research
Projects



03

Institutional
Publications



10

Policy Briefs



15+

Research
Seminars

Outreach and Policy Engagement



25+
Events

Capacity Building

12 PhD
students



7 males including
3 international students



5 females including 2
international



14 MA
students



8 males



6 females
including 1 international

3 short
courses:

Approximately
60 participants'

25

Executive Leadership
Programme in Monitoring
and Evaluation for Public
and Private Sectors



18

Research Methodology
& Report Writing



15

Tailored M&E training
for Ministry of Foreign
Affairs



RESEARCH ACTIVITY HIGHLIGHTS

During the period under review, ISSER advanced a diverse portfolio of research addressing some of the most pressing development challenges facing Ghana and Africa. The featured projects reflect the Institute's strategic focus on generating high-quality, policy-relevant evidence across key thematic areas, including youth employment and informal enterprise, health systems, education outcomes, agricultural value chains, financial inclusion, and taxation. Spanning national and multi-country studies, these initiatives combine rigorous empirical methods with strong partnerships to inform public policy, improve institutional performance, and support inclusive and sustainable development.



Youth in Indigenous Enterprises in the Informal Sector

This project examines how young people engaged in indigenous enterprises -- agriculture, textiles, crafts, and cosmetics -- drive inclusive and sustainable economic transformation across Africa. Through comparative research across seven countries (Ghana, Ethiopia, Nigeria, Senegal, Kenya, Uganda, and Tanzania), the study explores youth entrepreneurship, indigenous business models, gender dynamics, and technological innovation in the informal sector. Using surveys, case studies, and participatory methods, the project generates evidence to inform policy and programme design for strengthening indigenous enterprises and improving livelihoods.

Principal Investigator: Prof. Peter Quartey

Co-investigator: Prof. George Owusu

Location: Ghana, Ethiopia, Nigeria, Senegal, Kenya, Uganda, Tanzania

Duration: 1 December 2024 – 31 December 2027

Partners: PSI (Ethiopia), NISER (Nigeria), ISRA-BAME (Senegal), ICED (Kenya, Uganda, Tanzania) – technical partners; The Mastercard Foundation (funder)

Thematic Area: Employment, Indigenous enterprises



Ghana Service Delivery Indicator (SDI) Survey

This project assesses the quality and capacity of primary healthcare (PHC) service delivery in Ghana through a comprehensive, nationally representative approach. Using the World Bank's Service Delivery Indicators (SDI) methodology, the study evaluates whether PHC facilities had the equipment, medicines, infrastructure, and resources required to deliver high-quality care; measures diagnostic accuracy, adherence to clinical guidelines, and the availability of health workers; and captures patients' experiences, satisfaction, and financial burden. Through facility surveys, provider assessments, and patient interviews conducted using Computer-Assisted Personal Interviewing (CAPI), the project generates high-quality evidence to inform health sector reforms, strengthen accountability, and benchmark Ghana's performance over time and across countries.

Principal Investigator: Prof Ama Fenny

Co-investigators: Rev. Prof. Adobea Yaa Owusu, Dr. Michael Kodom

Principal institutions: Ministry of Health (MOH), Ghana Health Service (GHS), World Bank SDI Team

Location: Nationwide coverage across all PHC facilities in Ghana

Duration: 10 April 2023 – 31 December 2024

Partners: Ministry of Health (MOH), Ghana Health Service (GHS), World Bank (technical and financial partner)

Thematic area: Health



Financialised Cocoa Chains and Implications for Ghanaian Farmers' Productivity, Income and Livelihoods

This project examines how financialisation within global cocoa value chains affects smallholder farmers' productivity, income, and livelihoods in Ghana. Cocoa remains a crucial cash crop in Ghana, sustaining millions of livelihoods and contributing significantly to national export earnings. However, production has declined in recent years due to factors such as swollen shoot disease, ageing farms, unfavourable weather, and limited access to credit. The study explores how the increasing influence of financial actors and institutions has transformed cocoa markets, including how value is distributed, prices are determined, and farmers access finance and inputs. It analyses the roles of Licensed Buying Companies (LBCs), cooperatives, and financial intermediaries in supporting or constraining farmers' access to input services.

Principal Investigator: Dr. Ralph N.A. Armah

Co-investigators: Dr. Sophie van Huellen, Dr. Mawuenyega Makafui Butu, Mr. Shadrack Nyarko

Location: Ghana

Duration: 1 September 2024 – 31 March 2025

Partner: University of Manchester

Thematic Area: Agriculture



Digitised Microinsurance Agent Network among Informal Entrepreneurs in Ghana (DiMiieGha) – Pilot Project

This study assesses the feasibility, usability, and early outcomes of engaging informal entrepreneurs as agents in a digitised microinsurance distribution network. It forms the preliminary phase of a larger randomised control trial (RCT) focused on optimising informal entrepreneurship and expanding agent networks through digitised microinsurance in Ghana. The study focuses on informal enterprises across selected urban and rural enumeration areas in the Greater Accra and Eastern Regions. It applies experimental methods by assigning participants to treatment and control groups, where the intervention group receives training to deliver microinsurance services. The project generates insights to inform the design and implementation of subsequent phases.

Principal Investigator: Prof. Simon Bawakyillenuo

Co-investigators: Profs. Peter Quartey, Agyapomaa Gyeke-Dako, Cynthia Akwei; Drs. Richmond Atta-Ankomah, Andrew Agyei-Holmes, Michael Kodom, Innocent Agbelie, Mawuenyega M. Butu

Location: Ghana

Duration: February 2025 – February 2026

Partner: Transactshield Limited

Thematic Area: Informal Sector Digital Microinsurance



Taxation and Services in Accra's Markets

This project examines taxation practices in public markets and their implications for equity and livelihoods in urban Ghana. In many low- and middle-income settings, local taxes collected in public spaces remain underrepresented in administrative data, contributing to information gaps and regressive tax systems. The study focuses on women engaged in informal activities such as street vending and market trading, who often face multiple layers of taxation from both local authorities and national revenue agencies. Using a longitudinal panel survey of 3,500 traders, the project generates evidence on actual tax burdens and how these practices affect economic security. The findings support the development of more equitable and gender-responsive tax policies.

Principal Investigator: Prof. Simon Bawakyillenuo

Co-investigators: Dr. Richard Nkrumah, Benjamin Sekum

Location: Ghana

Duration: April 2025 – July 2025

Partners: International Centre for Tax and Development (ICTD), Women in Informal Employment: Globalizing and Organizing (WIEGO)

Thematic Area: Taxation in the Informal Sector



What Works Hub for Global Education (WWHGE) Outcomes Fund Study

This study examines the effectiveness of education interventions implemented under two outcomes funds: the Ghana Education Outcomes Project (GEOP) and the Sierra Leone Education Innovation Challenge (SLEIC). Conducted in collaboration with the Education Outcomes Fund (EOF), Ghana's Ministry of Education, and Sierra Leone's Ministry of Basic and Senior Secondary Education, the research identifies which interventions and implementation practices produce the strongest improvements in student learning outcomes. The study analyses how implementation evolves over time and assesses which dimensions are most critical for achieving effectiveness at scale. The findings contribute to ongoing learning and programme improvement.

Principal Investigator: Prof. Simon Bawakyillenuo

Co-investigators: Dr. Richard Nkrumah, Dr. Innocent Agbelie, Ralph Sam, Benjamin Sekum

Location: Ghana

Duration: February 2025 – April 2025

Partner: University of Oxford

Thematic Area: Education



Policy Prioritization through Value Chain Analysis (PPVC) in Ghana

This project provides technical and analytical tools for assessing agricultural commodity sectors to support evidence-based policymaking. Funded by the Gates Foundation, the initiative brings together a technical team from ISSER, the Bureau of Food and Agricultural Policy (BFAB), and the African Network of Agricultural Policy Research Institutes (ANAPRI). It draws on a combination of modelling and analytical approaches, including partial equilibrium models (PE), computable general equilibrium models (CGE), value chain analysis (VCA), and geographic information systems (GIS). These tools analyse commodity sectors and estimate the returns on policy interventions. In Ghana, the project applies these approaches to the rice, tomato, and poultry value chains to inform strategic investment and policy decisions.

Principal Investigator: Dr. Andrew Agyei-Holmes

Co-investigators: Dr. Nana Amma Asante-Poku, Dr. Richmond Atta-Ankomah, Prof. Daniel Adu Ankrah, Dr. Esther Aba Eshun, Dr. Isaac Apike, Dr. Richard Kwabena Nkrumah

Location: Ghana

Duration: January 2024 – December 2026

Partners: Ministry of Food and Agriculture, Council for Scientific and Industrial Research, National Development Planning Commission; the Gates Foundation (funder)

Thematic Area: Value Chains and Food Systems



The Cocoa4Future Project

This project addresses sustainability challenges within the cocoa value chain by designing farming models that support decent livelihoods while minimising environmental harm. It engages research and development partners across Ghana and Côte d'Ivoire to generate evidence on production systems and certification schemes. In Ghana, the study assesses the impacts of Fairtrade and Organic certification on farmers and wage workers using quantitative and impact evaluation methods. It also uses participatory approaches to co-develop recommendations with stakeholders. The findings inform policy and programme design within the cocoa sector.

Principal Investigator: Prof. Felix Asante

Co-investigators: Dr. Guillaume Soullier, Dr. Ralph Armah

Location: Ghana, Côte d'Ivoire

Duration: 1 February 2020 – 31 January 2026

Partners: University of Ghana, CRIG (Ghana); APDRA, ESA-INPHB, NITIDAE, UFHB, UJLG, UNA (Côte d'Ivoire); European Union, French Development Agency (funding partners)

Thematic Area: Cocoa Value Chain



Participants in the fourth edition of the Research School on Sustainable Development and Poverty Reduction during a field visit to Dome Market, a local market in the Ga East Municipality, July 2025.

Publications

ISSER's publications remain a central channel for disseminating rigorous, policy-relevant research and contributing to informed public debate. During the 2024–2025 reporting period, the Institute issued three flagship institutional reports -- two editions of the State of the Ghanaian Economy Report (SGER 2023 and SGER 2024) and the Ghana Social Development Outlook (GSDO 2024) -- alongside more than 10 policy briefs and high-impact publications emerging from key research projects. Faculty members also contributed to the broader body of scholarly output through individual academic publications.



A series of 10 policy briefs distils each chapter of GSDO 2024 into clear, accessible insights and actionable recommendations for policymakers and stakeholders.

Institutional Publications



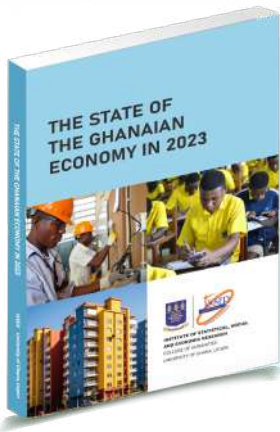
Ghana Social Development Outlook (GSDO 2024)

'ISSER's biennial social development report since 2012, provides evidence-based analysis of Ghana's progress and challenges across key sectors. The 2024 edition was launched in July 2025 and supported by ten policy briefs to enhance policy uptake.'



State of the Ghanaian Economy Report (SGER 2024) – 34th Edition

ISSER's flagship annual economic report delivers independent, data-driven analysis of Ghana's economic performance and outlook. The 2024 edition was launched in October 2025.



State of the Ghanaian Economy Report (SGER 2023) – 33rd Edition

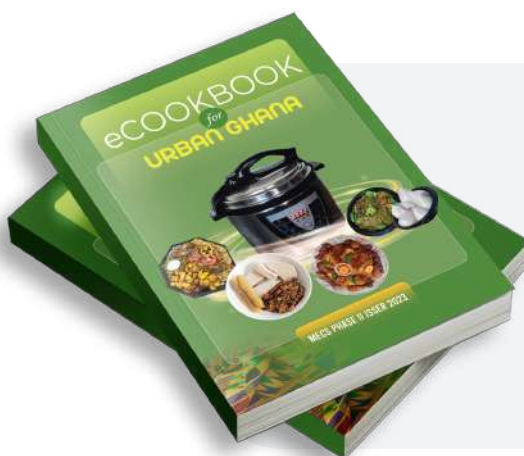
ISSER launched the 33rd edition of the State of the Ghanaian Economy Report, reaffirming its commitment to objective, policy-relevant economic analysis. It was launched in October 2024.

Featured Project Publications



Firms and Digital Payments: Evidence from Censal Microdata

Ghana's first census-based analysis of digital financial services adoption among firms. Produced by ISSER's ReFinD Research Initiative in collaboration with the Ghana Statistical Service, the report draws on data from over 1.9 million businesses in Ghana.



E-Cookbook for Urban Ghana

Developed under the Modern Energy Cooking Services (MECS) Phase II project, the publication presents evidence supporting Ghana's transition to electric cooking in line with the National Energy Transition Framework.

ISSER Seminar Series: Fostering Research Exchange

ISSER's Seminar Series provides a platform for researchers from Ghana and beyond to present ongoing work, receive feedback, and build collaborative research networks. It strengthens ISSER's intellectual community while connecting researchers and students across disciplines and institutions. Selected seminar topics from the year include:

Topic	Presenter
Firm Culture: How Social Norms Affect Gender Bias in Hiring in Online Labour Markets	Dr. Belinda Archibong, Johns Hopkins University
Redistributing Transportation Costs	Prof. Francis Annan, University of California, Berkeley
Economic Sanctions and Revenue Mobilization in Developing Countries	Prof. Sylvanus Kwaku Afesorgbor, University of Guelph
Assessing the Economy-Wide Impact of Ghana's National Adaptation Plan	Dr. Richard Ayisi, Department of Economics, University of Ghana
Financial Inclusion through Informal Groups: The Power and Challenges of Village Savings and Loans Associations	Michael Kwesi Otchere, Microfin Rural Bank
Developing the Comparative Study of Elites: Early Insights from the World Elite Database Project	Michael Savage, London School of Economics and Political Science
Introduction to UG Library System	Ms. Olivia A. Kpodoe, University of Ghana



Outreach and Policy Advocacy

Outreach and policy advocacy remain central to ISSER's mission of translating rigorous research into policy-relevant evidence. During the period under review, the Institute convened and participated in a wide range of engagement platforms aimed at bridging the gap between research and practice. Through the dissemination of research findings, structured exchange with stakeholders, and active participation in national and international forums, ISSER ensured that its evidence informed public

debate, illuminated critical socio-economic issues, and supported policy and programme design.

The engagements highlighted in this section are presented in reverse chronological order, from November 2025 to January 2025, with selected highlights from the final quarter of 2024. Together, they illustrate the breadth, depth, and policy relevance of ISSER's contributions.





ISSER engages the media on the 2026 Budget Statement

ISSER convened a media engagement on the 2026 Budget Statement, providing independent, evidence-based analysis and policy recommendations on Ghana's fiscal performance following the budget presentation to Parliament on 13 November 2025. The session was led by the Director, Prof. Robert Darko Osei, with contributions from experts across the Institute's Economics and Social Divisions.





ISSER showcases climate adaptation research at the 12th ANAPRI Annual Stakeholders Conference

ISSER participated in the 12th ANAPRI Annual Stakeholders Conference in Kigali, Rwanda, under the theme Driving Africa's Food Systems Transformation. Senior Research Fellow Dr. Andrew Agyei-Holmes delivered a keynote session highlighting ISSER's work on rice value chains under the Policy Prioritisation through Value Chain Analysis (PPVC) framework.





ISSER hosts multi-country policy dialogue on cocoa sustainability

ISSER hosted a two-day dissemination and policy dialogue workshop under the Cocoa4Future project, bringing together stakeholders from Ghana and Côte d'Ivoire to discuss evidence supporting the agroecological and organisational transition of cocoa farming in West Africa.





ISSER hosts alumni–faculty forum to strengthen graduate engagement

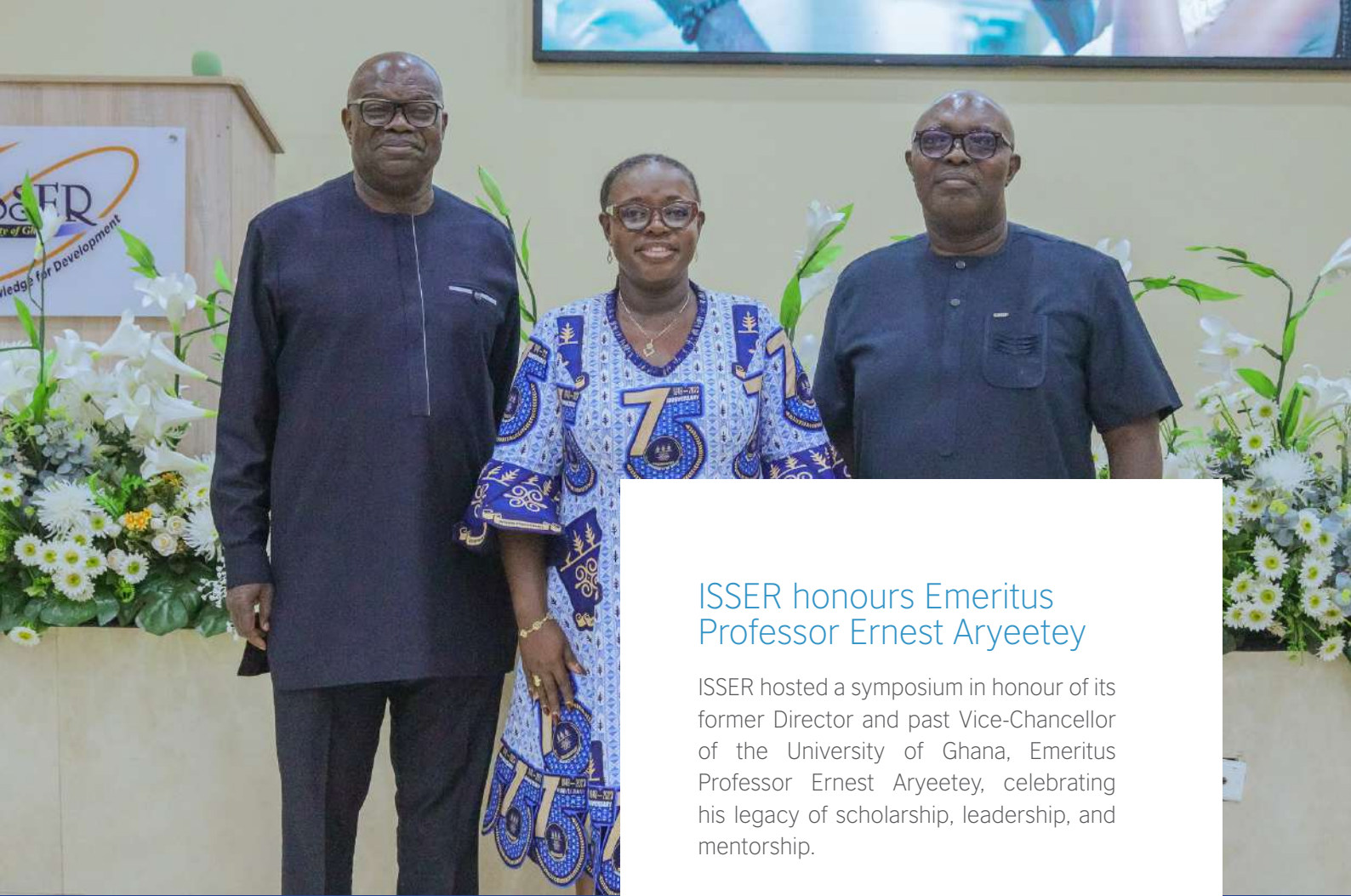
ISSER organised its first formal alumni–faculty networking forum to reconnect with graduates and lay the foundation for a structured alumni network. Senior faculty and Institute leadership engaged alumni in discussions on sustained, mutually beneficial engagement.



ISSER launches SGER 2024

ISSER launched the 34th edition of the State of the Ghanaian Economy Report, featuring a special chapter on debt, investment, and growth amid ongoing economic reforms.





ISSER honours Emeritus Professor Ernest Aryeetey

ISSER hosted a symposium in honour of its former Director and past Vice-Chancellor of the University of Ghana, Emeritus Professor Ernest Aryeetey, celebrating his legacy of scholarship, leadership, and mentorship.





ISSER trains Ministry of Foreign Affairs officers in Monitoring and Evaluation

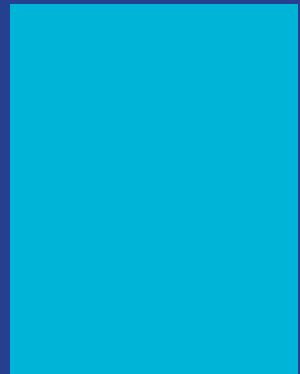
ISSER delivered a tailored one-week Monitoring and Evaluation training for officers of the Ministry of Foreign Affairs' Delivery Unit, supporting institutional accountability and economic diplomacy.





ISSER hosts stakeholder workshop on start-up skills training for youth

ISSER convened a workshop to present findings from a study on start-up skills training for National Service personnel, engaging key stakeholders to discuss implications for youth employment policy.



September



ISSER strengthens institutional collaboration with the Ghana Statistical Service

The Director led a courtesy visit to the Ghana Statistical Service to reaffirm collaboration in data use, policy analysis, and evidence-based decision-making.



August



Fourth Research School strengthens PhD capacity across eight Ghanaian universities

ISSER concluded the fourth Research School on Sustainable Development and Poverty Reduction, bringing together PhD students from eight universities across Ghana to strengthen advanced research skills, foster interdisciplinary exchange, and support the production of high-quality, policy-relevant doctoral research.





ISSER hosts E2A2025

ISSER hosted the 2025 Evidence to Action Conference and Exhibition (E2A2025) for the second consecutive year, reinforcing its leadership in convening high-level, policy-relevant dialogue.

ISSER Launches GSDO 2024, reinforcing leadership in social development analysis

ISSER launched the 2024 edition of the Ghana Social Development Outlook (GSDO), reaffirming its position as the country’s leading institution for comprehensive social sector assessment. The launch, chaired by Mrs. Mary Addah, Executive Director of the Ghana Integrity Initiative, convened senior stakeholders including the Pro Vice-Chancellor of the University of Ghana, the Executive Director of the Institute for Democratic Governance (IDEG), heads of academic departments, and leaders from research and policy institutions.



ISSER shares climate insights at DSRA 2025

ISSER participated in the Day of Scientific Renaissance of Africa (DSRA) 2025, observed by the University of Ghana under the theme “Harnessing Socio-Economic Opportunities and Innovation for Climate Sustainability: A Scientific and Intellectual Property Perspective.” Among other activities, ISSER organised a special edition of its seminar series on the theme “Assessing the Economy-Wide Impact of Ghana’s National Adaptation Plan” and hosted an exhibition showcasing its research, including contributions to climate sustainability and socio-economic advancement.



In addition, an ISSER expert spoke on a high-level panel examining how research and intellectual property can support the scaling of innovations for development impact.



ISSER leads seven-country study on youth and indigenous enterprises

ISSER launched the Youth in Indigenous Enterprises in the Informal Sector project, a seven-country comparative research initiative examining how young people engaged in indigenous enterprises can drive inclusive and sustainable economic transformation in Africa's informal economy. Supported by the Mastercard Foundation under its Youth Futures programme, the project is being implemented in Ghana, Ethiopia, Nigeria, Senegal, Kenya, Uganda, and Tanzania in partnership with leading research institutions.

The launch event brought together policymakers, development partners, researchers, and civil society actors, providing a platform to discuss the project's objectives, methodological approach, and policy relevance,



April

ReFinD Initiative unveils Ghana's first census on digital payment adoption by firms

ISSER's ReFinD Initiative unveiled Ghana's first-ever census on digital payment adoption by firms with the launch of the policy paper *Firms and Digital Payments: Evidence from Censal Microdata*, produced in collaboration with the Ghana Statistical Service. Covering over 1.9 million firms, the study highlights adoption patterns, barriers such as knowledge gaps and fraud concerns, and disparities across sectors and gender. The launch brought together stakeholders from fintech, government, industry, academia, and media for discussions on the findings and their relevance for evidence-based policy and advancing a more inclusive, cash-light economy.





ReFinD Initiative signs strategic partnerships to advance financial inclusion

ISSER's ReFinD Initiative formalised strategic partnerships with Ecobank Ghana and MobileMoney Ltd (a subsidiary of MTN) to advance research-driven financial inclusion. The collaboration with Ecobank focuses on agent banking, exploring challenges such as agent dormancy, customer

uptake, and financial literacy, while the partnership with MobileMoney Ltd provides access to agent networks and insights to improve mobile money service delivery in underserved communities. These partnerships strengthen the practical relevance of ISSER's research and support evidence-based policies that expand financial services to vulnerable populations.



October 2024



ISSER launches SGER 2023

ISSER launched the 33rd edition of the State of the Ghanaian Economy Report (SGER) 2023, reaffirming its commitment to objective, policy-relevant economic analysis and engaging diverse stakeholders in informed discussion. The event was chaired by Mr. Isaac Tetteh, Managing Director of BigPay Ghana Limited.

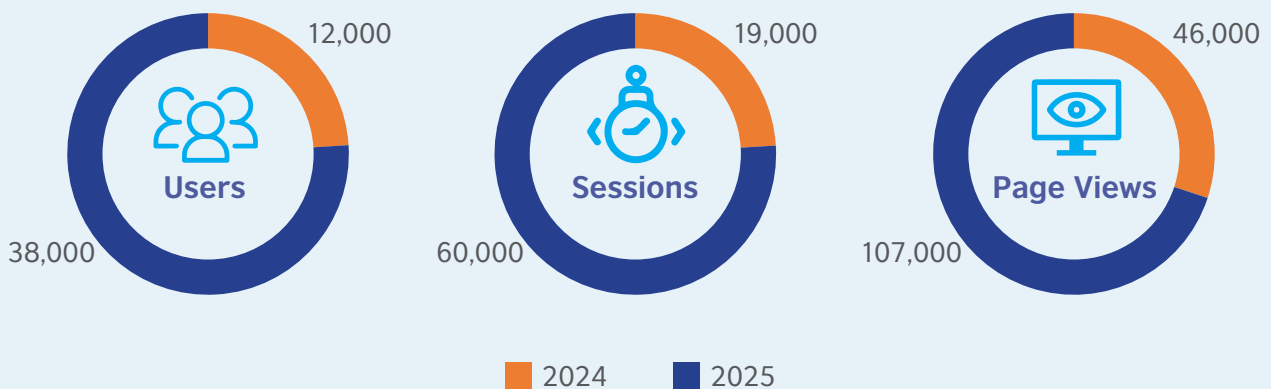




COMMUNICATION AND KNOWLEDGE OUTREACH

Effective communication is central to ISSER’s mission of turning research into policy impact. Through its communications strategy, the Institute extends the reach of research findings beyond formal events, strengthens its visibility as a trusted voice on development, and demonstrates accountability to partners and the public. In 2024–2025, ISSER’s digital platforms saw steady growth, reflecting increased engagement and wider dissemination of its work.

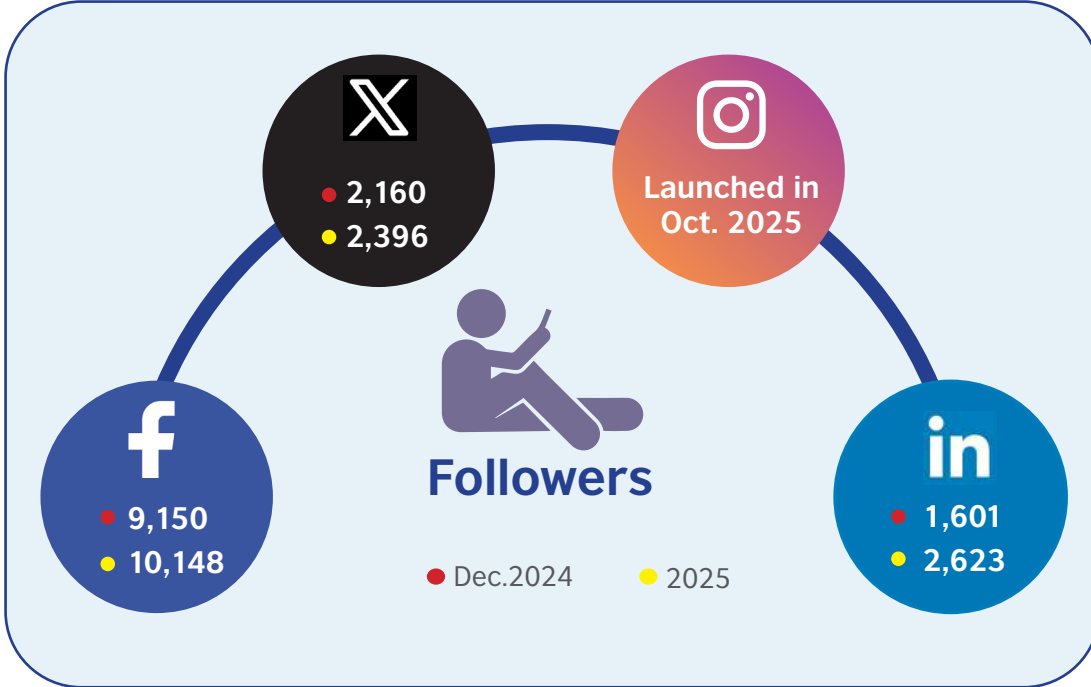
Website Performance





64% Social Media Growth

ISSER expanded its social media presence across platforms, recording strong follower growth averaging 64% year-over-year:



Media Engagement

ISSER maintained strong relationships with media houses throughout 2024–2025, positioning the Institute as a trusted voice on development issues. Media representatives participated in all major ISSER events, followed by extensive coverage across print, broadcast, and online platforms. ISSER experts were featured in numerous media interviews and panel discussions, providing evidence-based perspectives on policy debates and development challenges in Ghana and beyond.



2026 Budget Review

ISSER calls for tougher measures to deliver growth, jobs targets

Block IFFs, plug tax leakages to boost revenue – ISSER

2026 Budget: ISSER flags weak growth outlook, major structural risks

ISSER engages the media on the 2026 Budget Statement

Bring back road tolls and strengthen PPPs to deliver Accra–Kumasi expressway – Prof Quartey
ISSER demands clarity on Ghana's return to the capital market

ACADEMIC COMMUNITY AND STUDENT EXPERIENCE



ISSER's commitment to academic excellence encompasses both its research and the quality of the student experience. During 2024–2025, the Institute enhanced the learning environment through strategic investments in modern infrastructure, creating spaces that support student growth, engagement, and connection to ISSER. Additionally, an alumni–faculty networking forum strengthened ties with graduates, fostering a vibrant academic community that bridges current and former students throughout their academic and professional journeys.



Learning Infrastructure

E-Library Launch

In December 2024, ISSER inaugurated a modern 40-seat e-library with high-performance computers and high-speed internet, providing digital access to institutional publications, course materials, and the University of Ghana Library System's extensive databases.





Digital Centre Opening

ISSER launched a state-of-the-art 60-seat digital centre in September 2024, equipped with high-performance computers and multimedia technology to strengthen research and training capacity, host professional short courses, and support ISSER's academic programmes.

Alumni-faculty networking forum





COMMITMENT TO STAFF



ISSER's commitment to staff wellbeing and an inclusive organisational culture was reflected in targeted initiatives throughout 2024–2025. The Institute marked Breast Cancer Awareness Month with Pink October activities, including a health walk and screening organised in collaboration with the University of Ghana School Of Pharmacy, a health talk on mental health and ergonomic practices, and moments of connection that brought the ISSER community together.

ISSER also participated actively in University-wide initiatives, including Wear UG Day in October and the inaugural University of Ghana Employee Week in November 2025, strengthening bonds within the ISSER community while demonstrating the Institute's commitment to advancing the University's strategic objectives.



COLLABORATORS

We deeply value the support of our partners, whose collaboration strengthens our efforts to translate rigorous research into informed decision-making and meaningful development outcomes. We remain committed to nurturing and expanding these partnerships, and welcome new collaborators who share our vision for evidence-led development



Appendices

STAFF LIST 2024/2025

FACULTY



Prof. Robert Darko Osei
Professor / Director



Prof. Felix Asante
Professor



Prof. George Owusu
Professor



Prof. Peter Quartey
Professor



Emeritus Prof. Ernest Aryeetey
Emeritus Professor



Prof. Augustin K. Fosu
Professor



Rev. Prof. A. Y. Owusu
Professor



Prof. Charles Ackah
Associate Professor



Prof. Nana Akua Anyidoho
Associate Professor



Prof. Simon Bawakyillenuo
Associate Professor



Prof. Fred Dzanku
Associate Professor



Prof. Ama Pokuaa Fenny
Associate Professor



Prof. Isaac Osei-Akoto
Associate Professor



Dr. Martha A. Awo
Senior Research Fellow



Dr. Andrew Agyei-Holmes
Senior Research Fellow



Dr. Richmond Atta-Ankomah
Senior Research Fellow



Dr. Elizabeth A. Asante
Senior Research Fellow



Dr. Cynthia Addoquaye Tagoe
Senior Research Fellow



Dr. Kofi Takyi Asante
Senior Research Fellow



Dr. Aba Obrumah Crentsil
Senior Research Fellow



Dr. Kwame Adjei-Mantey
Research Fellow



Dr. John Kofie Anoku
Research Fellow



Dr. Ralph Nii Armah Armah
Research Fellow



**Dr. Nana Amma
Asante-Poku**
Research Fellow



Dr. Michael Kodom
Research Fellow



Dr. Gertrude Dzifa Torvikey
Research Fellow



Prof. Francis Annan
Adjunct Professor



Dr. David Sarfo Ameyaw
Adjunct Scholar



Prof. William F. Steel
Visiting Scholar



Dr. Pierre Girard
Visiting Scholar



Dr. Guillaume Soullier
Visiting Scholar

SENIOR LEVEL ADMINISTRATIVE STAFF



**Mrs. Mawuena
Akuamoah-Boateng**

Administrator/Senior
Assistant Registrar



**Mr. Karimu
Gbene Suglo**

Senior Accountant



**Mr. Emmanuel
Hanson Jnr**

Accountant



**Mrs. Vicentia
Quartey**

Assistant Registrar
(Marketing &
Communications Officer)

SENIOR STAFF CATEGORY

Prince Dwomoh

Angela Adatsi

Regina Adu

Benedicta Quartey

Ernest Koku Hablameh

Ebenezer Ato Acquah

Mohammed Abdulkadr

Constance Nuamah

Philip Agyemang

Eric Odoi

Principal Library Assistant

Administrative Assistant

Principal Administrative Assistant

Principal Administrative Assistant

Principal Administrative Assistant

Principal ICT Assistant

Accounting Assistant

Principal Accounting Assistant

Accounting Assistant

Assistant Transport Officer

JUNIOR STAFF CATEGORY

Stephen Adjetey Adjei

Daniel Baah

Alex Birikorang

Essandor Issah

Francis Abakah

Mariama Bukari

Rapheal Kobla Dawuso

Mary Ankrah

James Nkansah

Joseph Anati

Hilda Kolog

Kofi Adona

Ernest Agyei-Kwakye

Eric Kwame

Sharon Bobie

Sylvester Kobina Adisola

Emmanuel Kwodam

Patricia Akaribo

Chief Driver

Chief Driver

Chief Driver

Senior Messenger/Cleaner

Messenger/Cleaner

Headman

Messenger/Cleaner

Messenger/Cleaner

Security

Supervisor (Cleaners/Gardeners)

Cleaner

Gardener

Security Officer

Gardener

Messenger/Cleaner

Security Guard

Security Officer

Messenger/Cleaner

PROJECT STAFF

Dr. Miriam Kosi	Post-Doctoral Fellow
Dr. Daniel Osarfo	Postdoctoral Fellow - ReFinD
Ms. Roselyn Adadzewa Otoo	Project Director - ReFinD
Dr. Aisha Adam	IDRC-Future of Works and Gates Foundation Projects
Dr. Richard Kwabena Nkrumah	Policy Prioritization through Value Chain Analysis (PPVCII)
Dr. Esther Aba Eshun	Policy Prioritization through Value Chain Analysis (PPVCII)
Dr. Isaac Akurugu Apike	Policy Prioritization through Value Chain Analysis (PPVCII)
Mr. Emmanuel Sasu	CIRAD
Mr. Chi Man Cheung	ReFinD Project
Mr. Shadrack Nyarko	Feed the Future Ghana Trade Initiative (FtF GTI) Activity Stocktaking Performance Evaluation Project
Ms. Mavis Abbam Amissah	USAID/Ghana Monitoring, Evaluation and Learning (MEL) Platform
Ms. Hannah Afra Darkwah	Economics Division
Ms. Yaa Boatema	Fiscian Young People and Green Jobs
Ms. Grace Wilson	Designing a method to address work organization at farm and value chain levels
Mr. Ralph Sam	MLE
Dr. Zhe Liu	Post-Doctoral Fellow
Dr. Francis Dompae	Post - Doctoral Fellow - Ghana Socioeconomic Panel Survey (GSPS)
Mr. Emmanuel Kove	SPIA Project
Ms. Selina Avleshie	Mastercard Foundation Project
Ms. Nana Abena Darkwah Nyame	ReFinD Project
Dr. Mary Akweley Cobblah	Post-Doctoral Fellow
Dr. Mawuenyega Makafui Butu	ReFinD PILOT GREENFIELD PROJECT
Ms. Linda Buabema Dadzie	ReFinD Project
Mr. Benjamin Sekum	WWHGE Project
Mr. Emmanuel Asiwome Drovou	CIRAD Project
Mr. Enoch Adjei	ReFinD Project

NATIONAL SERVICE PERSONNEL

Papa Yaw Antwi

Lawrencia Torgbor

Cyril Diekumah

Elaine Annor

Williams Osei Frimpong

Godfred Dwomoh

Shalom Nhyira Asare

Yaw Offeh Dansoh

Rebecca Blematessa

Noah Marki

Hannah Manu

Jennifer Carolina Appiah

IT Office

Front Desk (Office Complex and Digital Centre)

Social Division

ReFinD Secretariate

Conference Facility

Economic Division

Graduate Office

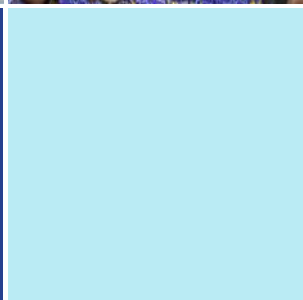
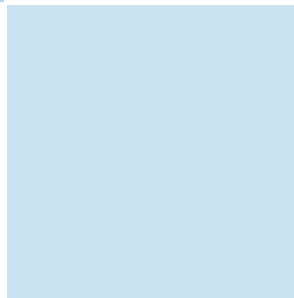
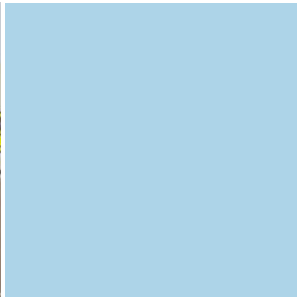
Statistics & Survey Division

Front Desk (Main Building)

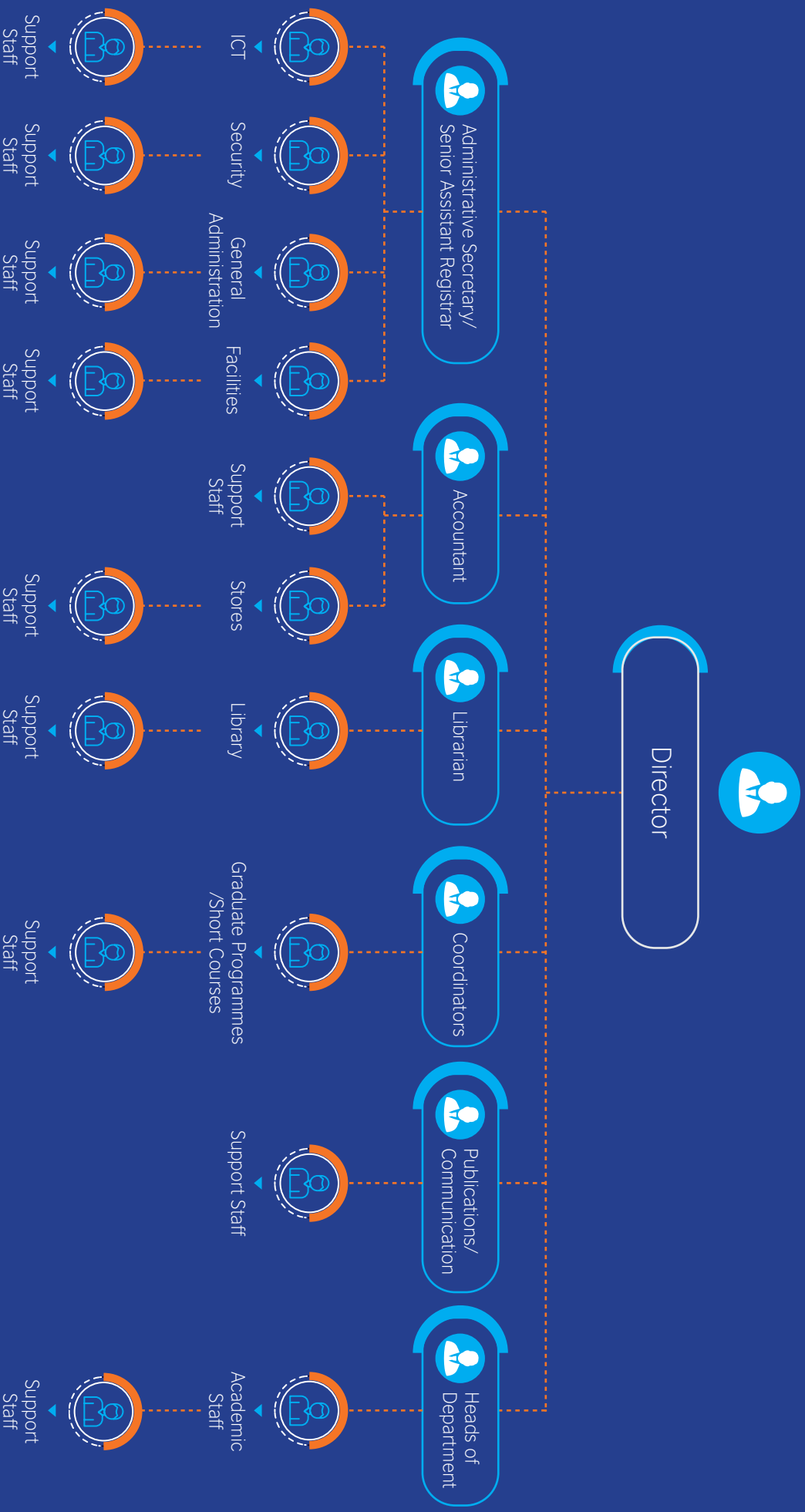
Library

Director's Office

Communications Office



ORGANOGRAM



ABOUT ISSER

The Institute of Statistical, Social and Economic Research (ISSER) is a semi-autonomous institute within the College of Humanities at the University of Ghana. Recognized as one of the leading social science research institutions in Sub-Saharan Africa, our primary focus is conducting research,

providing training, and engaging in outreach and dissemination activities to promote the socio-economic development of Ghana and Africa. With a distinguished faculty of over 27 PhD-holding members and a network of local and international collaborators, ISSER is at the forefront of shaping policies and driving positive change in and beyond Ghana.

VALUES



TEAMWORK

We will leverage each individual's unique expertise to achieve the best results and respect the contributions of all.



CREDIBILITY

We will be thorough and sincere in all our work to ensure the accuracy and integrity of our outputs.



RESOURCEFULNESS

We will push ourselves to develop solutions in our work and continuously seek new opportunities.



RESPONSIVENESS

We will respond proactively to the changing dynamics and needs of our environment.



COMMITMENT

We will act in the best interest of the Institute, holding ourselves accountable for our roles.

Programme Coordinators

- Dr. Andrew Agyei-Holmes, PhD Programme Coordinator
- Dr. Nana Amma Asante-Poku, Seminar Coordinator
- Dr. Kofi Takyi-Asante, Short Courses Coordinator
- Dr. Aba Obrumah Crenstil, MA/MPhil Programme Coordinator





Website:
www.issler.ug.edu.gh



Tel:
+233 577 699 900
+233 577 699 901



Address:
P. O. Box LG 74,
Legon, Accra



Email:
issler@ug.edu.gh



@ISSERUG



@theisslerug

© 2025

Institute of Statistical, Social and Economic Research (ISSER)
Communications and Publications Office
@ISSERUG

Content and Production Coordinator: Vicentia Quartey
Editorial Review: Prof. Robert Darko Osei